

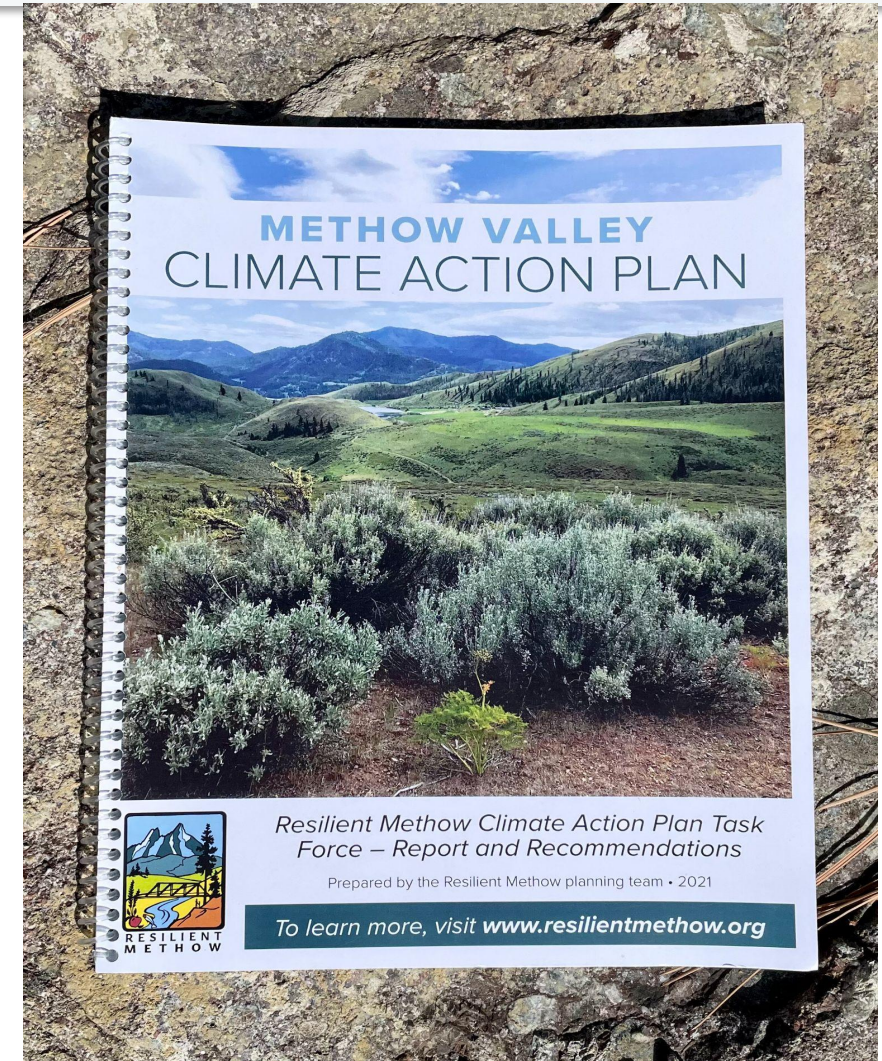
Welcome to the First Quarterly Methow Valley Climate Action Plan Forum



We'll get started shortly. Chime into the chat with where you're tuning in from!

Climate Action Plan Goals for a Resilient Methow

1. Water to sustain nature and people.
2. Resilient, healthy, and abundant natural systems.
3. A community prepared and safe in the event of adversity.
4. A low-carbon, efficient, livable & resilient/affordable built environment.
5. A thriving place-based economy with equity for all.
6. A vibrant future for agriculture.
7. A carbon-neutral Methow Valley.





Climate Action Plan Early Successes

A sampling of what has happened in the last year

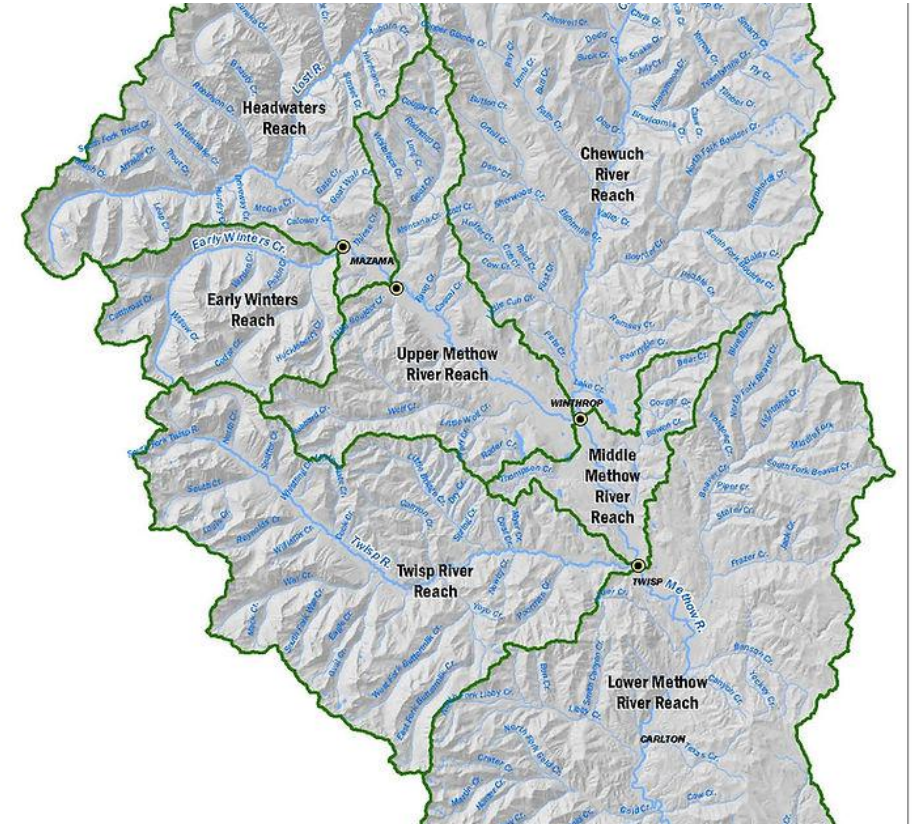
Water Availability Project

Methow Watershed Council

Status: MWC completed a project that measures single family domestic (well) water use, confirming the use of 710 gallons per day, which provides a number to the county to track against the 2 cfs reserve (Methow rule).

Next Steps: County will use this number for rural development for lots that qualify for having a well. Next, the MWC will submit the report to Ecology, with recommendations for next steps inducing peer review of the withdrawal number.

**Goal 1 Efficiently use and conserve water;
meter water usage**



Okanogan Water Bank Project

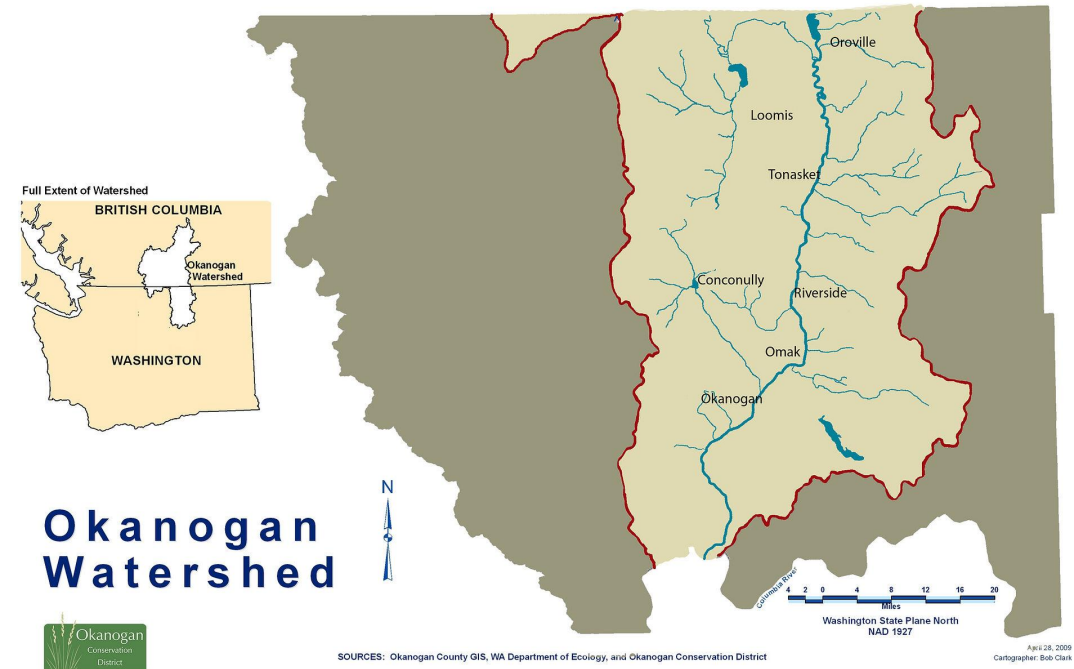
Okanogan Conservation District



Status: The Okanogan Conservation District is actively working through the necessary steps to create a water bank that is administered locally to provide service throughout the county. The goal is to help retain water rights in the county and provide water to our local farmers and ranchers for agricultural use. Working with the water bank will be voluntary. The water bank will be run by the district but in partnership with the county.

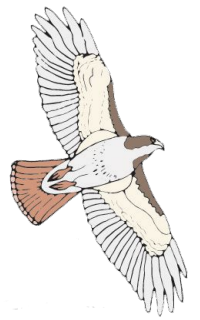
Next Steps: We hope to acquire water rights that will be secured by the water bank and protected from relinquishment so they may be repurposed to other users in the same watershed.

Goal 1 Retain water rights in the valley through tools such as water banking.



Resilient Forests

Methow Valley Citizens Council, in partnership with the North Central Washington Forest Health Collaborative



Status: Methow Valley Citizens Council, working through the North Central Washington Forest Health Collaborative, has been engaging scientists, foresters, wildlife biologists, fire ecologists, and agency officials from both the Forest Service and the Department of Natural Resources to identify and prescribe restoration treatments for forests that have been departed from natural stand conditions due to fire suppression.

Currently, the Mission Project in the Buttermilk and Libby Creek Watersheds is being treated through several thousand acres of understory thinning, and an additional 2,000 acres of commercial overstory treatments. The Twisp Restoration Project is the next major project to be implemented, starting in 2023 and will treat the lower Twisp River watershed through thinning, prescribed fire, road decommissioning and management, and aquatic restoration.



Next step: The Collaborative developing a restoration plan for the upper and middle Twisp watersheds, with agency staff and forest ecologists. This project is in concept phase, and will go out for public review and engagement in 2023. The Upper Methow watershed near Mazama, is another area identified by the DNR and Forest Service has a high priority for future treatment. MVCC is also bringing together interested parties to develop a prescribed burn program for private landowners.

GOAL 2: Resilient and Healthy Natural Systems

Stream Restoration and Biodiversity

Methow Beaver Project



Status: Grants awarded by WA Dept of Ecology, Wildlife Conservation Society, & Broad Reach Fund to support beaver conservation and beaver based stream restoration. This includes restoration of woody structure in wildfire impacted streams, beaver relocation, efficacy monitoring, adaptive management, & beaver coexistence solutions.

Next Steps: Broaden collaboration with state land managers to expedite and expand application of beaver based stream restoration strategies and work to modernize beaver management across WA State and the nation.

Goal 1 Increase Natural water storage capacity

Goal 2 Protect functions and values of riparian and aquatic systems



Fostering a Climate Resilient Landscape

Methow Conservancy



LAND

Protection of 10,000 acres of open space including:

- Approximately 1700 acres of agricultural land, 2400 acres of upland habitat, 1600 acres of riparian habitat, and 3600 acres of shrub-steppe

Goals 1, 2, 6, 7 - Water, Healthy Natural Systems, Agriculture, Carbon Neutrality

AGRICULTURE

Farms to Neighbors

- Offers market value to local farmers for food that is redistributed to clients of The Cove Food Bank.

Woodward Ag. Field

- 86 acres of farmland owned by the MC and leased to BCS Livestock. The MC is funding major irrigation upgrades for responsible water use.

Methow Grown

- Ongoing Farm and Ranch Directory; aims to connect local producers to resources, consumers, and each other.

Goals 1, 2, 6, Water, Healthy Natural Systems, Agriculture

COMMUNITY

Meadowlark Natural Area

- 139 acres w/ public access adjacent to the town of Winthrop.

Good Neighbor Handbook

- An orientation to individual-level stewardship in the Methow sent to all new residents and landowners in the Methow.

Active Members of Housing Solutions Network

- Sarah Brooks is a member of the Network.

Goals 2, 4, 7 - Healthy Natural Systems, Livable Built Environment, Carbon Neutrality

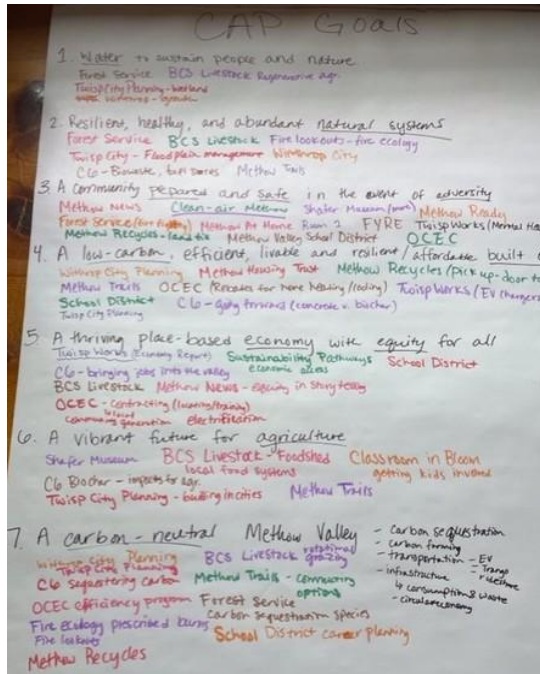
Adding capacity for climate resilience while growing sustainability leaders through professional work experience & academic learning



Sustainability Pathways

- 18 undergraduate students
- 2 alumni mentors
- 24 organizational partners
- > 5,800 hours of sustainability service
- 6 community-engaged projects

Altogether, supporting all 7 CAP goals:



Coming Together for Climate Action



Aligning Comprehensive Plans w/ Methow Valley CAP Goals

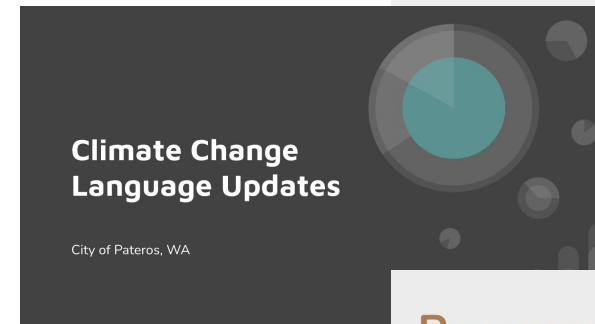
COLLEGE OF THE ENVIRONMENT



Urban and Environmental Planning and Policy Dept.
collaboration with Sustainability Pathways &

Dr. Tammi Laninga's Planning Regulations course:

- Four teams of undergraduate planning students
- Review comprehensive plans for Okanogan County, Pateros, Twisp, and Winthrop
- Made recommendations for integrating climate resiliency policies, language, and Methow Valley Climate Action Plan priority actions
- Teams consulted with planners Pete Palmer, Jord Wilson, Kurt Danison, & Rocklynn Culp
- Teams delivered final reports and presentations
- **Policy recommendations connected with all 7 CAP Goals**



Recommended
Climate Language for
the Town of Twisp
Comprehensive Plan

WWU Urban and Environmental
Planning and Policy 374, Spring 2022

**Recommended Language and
Policies for Okanogan County**

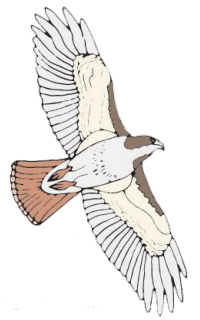
Western Washington University Okanogan County Team



Team Contributors:
Weston Sitterding, James Hosheit, Asher Schoepflin, Ciara Ortiz, & Nathan Mark

Comprehensive Planning and Land Use

Methow Valley Citizens Council



Status: Okanogan County finalized its comprehensive plan at the end of 2021. In doing so, it committed to creating a subarea planning process specifically for the Methow Watershed to address some of the unique needs of the Valley. MVCC has been advocating for a plan that fully addresses climate impacts, including water availability and increased fire on the landscape.

The Town of Twisp is also revising its comprehensive plan, and will work to address the need for affordable housing. The towns of Twisp and Winthrop are conducting a housing study to evaluate the need for housing in the valley.



Next Steps: The county is forming a planning committee to guide the development of a subarea plan for the Methow Valley. MVCC continues to advocate for the inclusion of specific and measurable goals to address water availability, increased fire on the landscape, and ensure resilient healthy natural systems, when addressing development and growth through the County's comprehensive plan, zoning regs, and the critical areas ordinance.

GOAL 2: Resilient and Healthy Natural Systems

Wildfire Risk Reduction

Fire Adapted Methow Valley

Status: Continuing focus on equity and community-wide expansion of wildfire risk awareness and risk reduction:

- Completed 2-year pilot of **Equitable Mitigation Program** helping community members who need help managing vegetation and other flammables around their homes to reduce fire intensity and increase firefighter safety.
- 20 + fuel reduction work parties.
- Facilitated 18 neighborhood fire preparedness groups and initiated a peer-to-peer network for mutual assistance.
- Conducted wildfire resiliency and awareness education workshops with teachers and elders, and helped shape plans for the fire-resistant demonstration landscape at the new Winthrop Library.

Next Step: Completing toolkit for developing and running equitable wildfire risk mitigation programs, for use by organizations anywhere wildfire is a threat.

Goal 3 Advance the Methow Valley as a fire-adapted community (priority strategy)

Goal 7: Improve and protect the health to reduce wildfire emissions



Smokeready community

Clean Air Methow + others

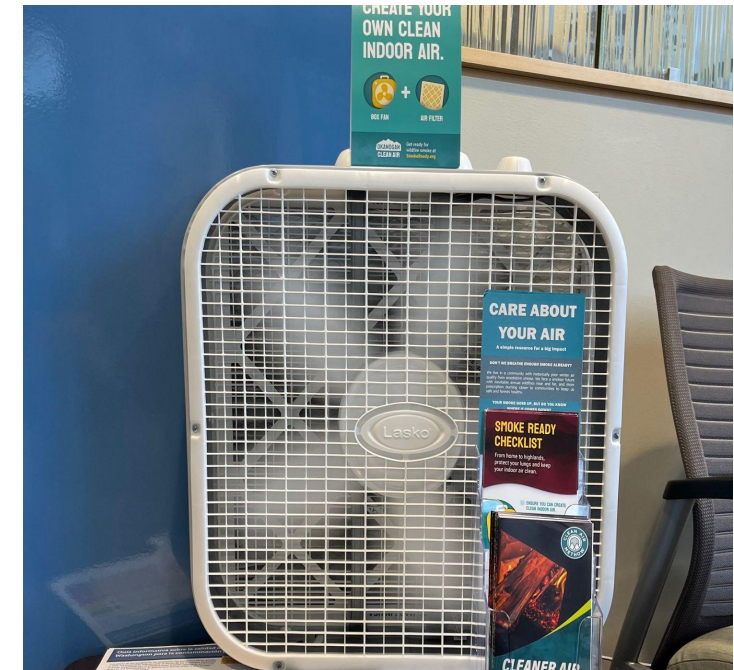
Status:

- Reduced smoke through chipping drives; replacing old woodstoves; and conducting a communication campaign about smoke readiness (www.smokeready.org)
- 14 smoke-ready outreach displays (in various health clinics), and facilitated distribution of over 250 box fan air cleaners to vulnerable populations.
- Smoke preparedness efforts at Winthrop Library, the Methow Valley Community Center, the Twisp grange, and Okanogan Public Health are actively exploring this topic

Next steps:

- Our county emergency manager is leading the update of our multi-hazard mitigation plan and working with the wildfire smoke impacts working group to incorporate smoke disasters
- Work with the 19 applicants to replace old wood stoves and schedule installs with North Valley Lumber.

Goal 3 Health and Safety - Smoke ready community



Increase the Tree Canopy in Town

Town of Twisp Tree Board

Status: The Tree Board received two grants this year:

- 1) CiB via NCW Foundation: To work with Liberty Bell first grade classes to plant a tree seed (collected in Fall of 2021) resulting in 58 seedlings ready to be planted in the nursery
- 2) DNR Grant: Working with an urban forestry consultant to update our 2004 Urban Forest Management Plan and write a comprehensive Tree Planting Plan. This new plan will guide us in our efforts to increase the Urban Forest canopy in the Town of Twisp for the next decade.

Next Steps:

- 1) CiB: Collecting tree seeds this fall for current year first graders to plant Spring 2023. Each year we will continue planting seeds with first graders and tending prior year trees. When trees reach 7 years old we will distribute them into the communities of the Methow Valley for planting.
- 2) DNR Urban Forestry Grant: Following our new master Tree Planting Plan, we will plant trees around town each year to increase the Urban Forest canopy in our town.

Goal 4 Increase Tree Canopy for Shade in Urban Areas



Affordable Low-Carbon Housing Methow Valley Housing Trust

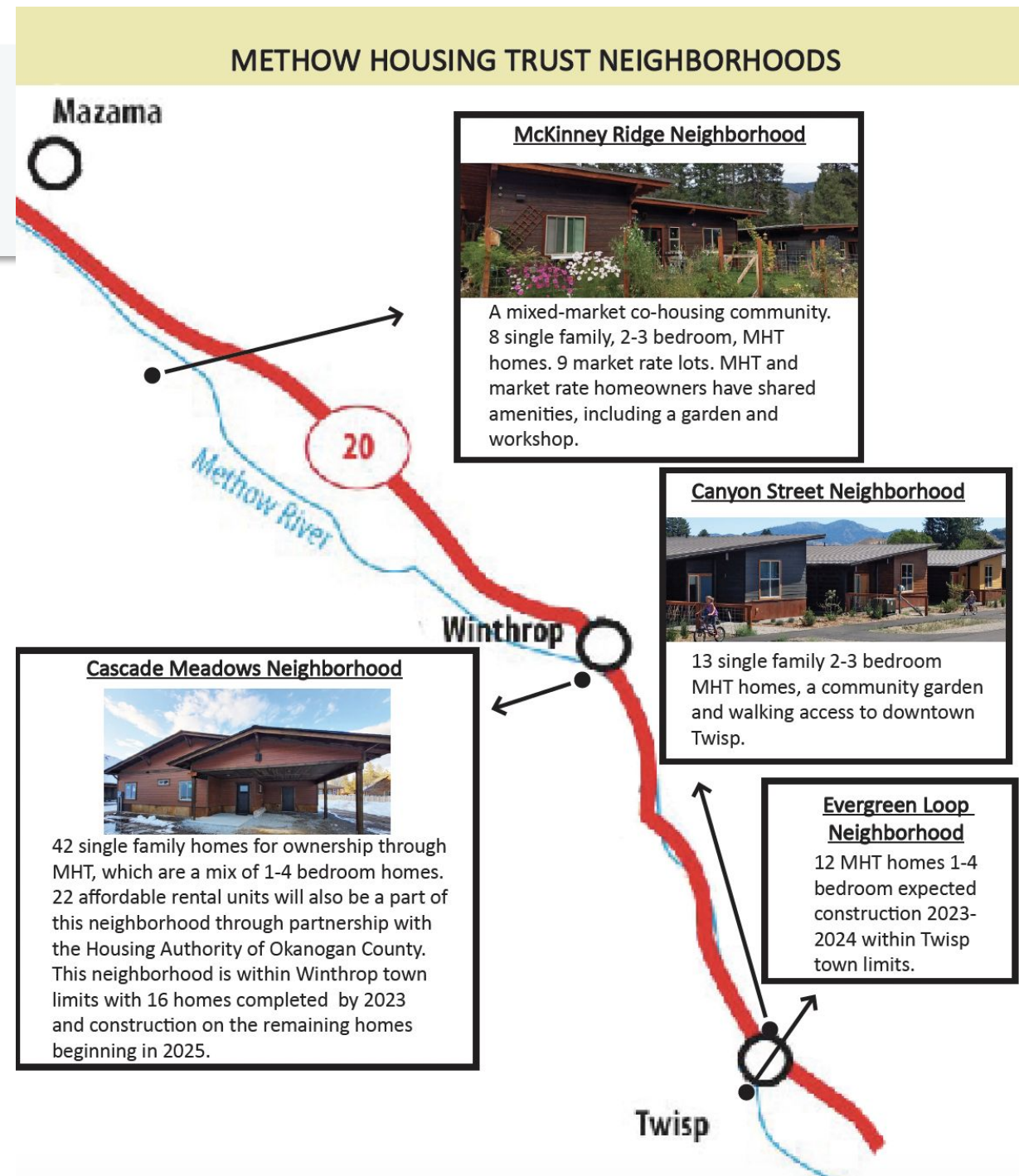
Status: A successful “Let’s Build Belonging” capital campaign demonstrated that the community supports affordable housing.

By this spring there will be a total of 37 housing trust homes. In the pipeline are 12 homes in Twisp and 26 in Winthrop. The homes follow affordable low carbon principles - they are efficient and EV charging compatible.

Next step: Ongoing land acquisition and support needed to meet demand and keep up with rising building costs, currently 60+ families in the wait pool.

Climate Action Plan

Goal 4 Build affordable, low-carbon housing



Small Business Resiliency Grants

Twispworks

TWISPPWORKS



Status: TwispWorks distributed \$64,250 in grants to local businesses

- In 2020 in reaction to COVID shutdowns
- In 2021 in reaction to the devastating wildfire season
- In 2022 as a **preemptive** measure to help spur innovation in adaptation to climate change in our businesses

Next step: Evaluate grant impact, ID more ways to get into the green economy and ahead of the coming changes



Goal 5 - Completion of a climate-friendly visitor guide, hosting the Methow Investment Network, and Methow Valley Goods store on TwispWorks campus

Refrigerated Truck and Commercial Kitchen

Methow Valley FoodShed

Status: Methow Valley FoodShed was awarded a large WSDA grant to purchase a refrigerated truck and commercial kitchen buildout, both of which will be available for use by participating farmers and food vendors.

Next Steps: Increase public awareness of FoodShed & how to participate in ordering; secure larger space for Twisp pickup site; increase farmer/food processor participation

Goal 6 Cultivate public appreciation for all working agriculture and grow the financial sustainability of farms



Energy Efficiency Program

Okanogan County Electric Co-Op



Status: Started a Ductless Heat Pump rebate program in June 2022 through Bonneville Power Administration and Comfort Ready Homes. Hosted an intern from Western Washington University and created a strategy to expand the energy efficiency program into other areas including windows and doors, insulation, smart thermostats, and other measures offered through Bonneville Power Administration's program

Next Step: Evaluating program expansion for the 2023-2025 period

Climate Action Plan Goal 7C: Expand energy efficiency and conservation programs



Energy Retrofit and Clean Air Refuge

Methow Valley Community Center

Status: Awarded \$25,000 Game Changer grant to fund an engineering study to weatherize and replace oil burning stove with electric HVAC system with air filtration. Once completed, this historic 1912 building will continue to safely and efficiently provide the community with programming, recreational events, office space and an emergency shelter for years to come.

Next step: Grant writing and fundraising underway to fund the retrofit

Goal 3 Create public spaces to provide cool, clean air during smoke events

Goal 5 Adapt recreation facilities

Goal 7 Reduce emissions; increase energy efficiency and conservation



Energy Retrofit and Clean Air Refuge

Twisp Valley Grange

Status: Install 2 energy efficient, cold-climate Mitsubishi mini-split heat pumps this winter. Add air filtration to the existing duct work this spring. Ready to be a refuge from extreme heat and unhealthy air in summer 2023.

Next Steps: Insulate the building and make kitchen appliances more energy efficient. Need grants and fundraising.

Goal 3 Create public spaces to provide cool, clean air

Goal 7 Reduce emissions; increase energy efficiency and conservation



Fast Electric Vehicle Charging Stations for Cascade Loop WSDOT Partnership

Status: Grant awarded by WSDoT to install fast DC EV charging stations in *Pateros, TwispWorks and Newhalem*. A second grant was also awarded to upgrade all the EVCS fast chargers on route 2, including in Wenatchee.

Community volunteers organized the partnership between host sites, public utilities, Energy NW and EVCS for the new chargers; more than a dozen Okanogan County municipalities and organizations wrote letters of support to help win the very competitive grant.

Next Step: Contracts are signed and chargers are slated to be installed by July, 2023

Goal 7 Build EV infrastructure and accelerate the transition to EVs; Reduce transportation emissions



Winthrop Library Level 2 EV Chargers

Town of Winthrop

Status: The Town of Winthrop is partnering with Rivian to install two Level 2 EV chargers at the new Winthrop Library

Next Steps: The new chargers have designated parking spots and are slated to be up and running before the end of the year. Continue to seek funding for library solar panels.

Climate Action Plan Goal 7
Build EV infrastructure and accelerate the shift to Electric Vehicles; Reduce transportation emissions



Twisp to Winthrop Trail Project

Methow Trails



Status: Methow Trails currently has buy in from around 85 homeowners for a ski and bike trail connecting Winthrop and Twisp and is looking into building more spur trails to connect neighborhoods to the trail system.

Existing trails provide fire break, and significant fuel reduction.

Next Step: Continue outreach to homeowners and efforts to build new trails.

Goal 7 Develop active transportation options and infrastructure, connecting neighborhoods and communities.



Circular Community Model and Compost Expansion

Methow Recycles



Status: Methow Recycles is continuing to expand beyond recycling to focusing on a circular community model through resource sharing, workshops, and education. Continuing to explore composting at a community scale.

Next Steps: In 2023 plan to roll out a residential compost program; continue to explore commercial scale compost; and build up programs around resource sharing and repair.

Goal 7 Promote a sharing and reuse economy



Liberty Bell High School Climate Education and Career Pathways



Status:

- Continued development of vertical aligned Career and Technical Graduation Pathways at the ILC and LBHS that connect students with industry recognized credentials and post high school credit
- Continued development of Outdoor Recreation and Leadership activities, curriculum and courses
- Addition of new College in the High School Natural Resources classes, Atmospheric sciences and Global Warming and Forests and Society at LBHS
- Continued partnership with Classroom in Bloom for elementary and high school horticulture programming
- LBHS student action project conducted a school waste audit (2021)

Next Steps:

- Partnership with WWU Sustainability Pathways program and Career Connect Washington to develop a framework and curriculum to incorporate Sustainable Design and Systems Thinking in CTE programs to prepare student for increasing focus in sustainability across industry sectors and new 21st century skills needed in the Green Economy
- Collaboration with WA Department of Ecology to develop a scope of work for conducting feasibility and needs analysis study for adding electrical vehicle/alternative fuels vocational training to new automotive technology program

Climate Action Plan Goals:

Goal 5: A thriving Place-based economy prioritizing equity

Goal 6: A thriving future for agriculture

Goal 2: Resilient and healthy natural systems

Goal 7d: Consumption and waste

Goal 7a: Transportation



Resources for Getting Involved in Methow Climate Action



Starting a New Action Project

The **Implementation Hub** was started by volunteers to support the efforts of others.

STEP 1 Identify your passion project

STEP 2 Make an appointment for a goals and metrics tutoring session

STEP 3 Check for collaborators

STEP 4 Check on grant and funding opportunities

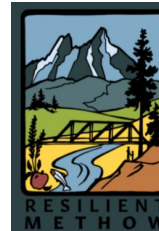
Magic Happens

STEP 5 Share your progress with the Hub to expand the ecosystem of projects / inspire others

Grants and Funding Opportunities

- Huge amount of federal and state climate funding headed our way.
- Volunteers Tom Jones and Murray Taylor created online resource, grant and legislative summary tool to track and communicate relevant opportunities to the Methow.
- Climate Action Plan that we can all use for applying for grant funding, demonstrating community support, and a shared vision.

Resilient Methow Climate Grant Tracking Tool



[Resources](#) [About](#) [Get Involved](#) [Events](#)

Resources, Grants, and Legislative Summaries

Complete List of Grant and Funding Opportunities

This active and sortable list of grant and funding opportunities that are related to the goals in the Methow Climate Action Plan. You can sort and select in the top row which grants and resources you would like to view. If you have any grants or resources you would like to add, please send them to info@resilientmethow.org

<https://www.resilientmethow.org/resourcesandgrants>

Resilient Methow Hub Volunteer Needs

Volunteer needs and opportunities:

- Grant writing support for specific projects
- Communications and web development
- Story telling/newsletter writing
- Looking for “ambassadors” related to different goals and strategies in the plan
- Future forum event planning

Contact info@resilientmethow.org



**R E S I L I E N T
M E T H O W**

Upcoming Opportunities - Events

Events:

Make Soil Not Smoke Chipping Event at Classroom in Bloom with Clean Air Methow next Friday 11/3 10-2pm

Climate Action Happy Hour with Methow Conservancy at Twisp Grange featuring OSB Clear the Haze Beer 11/29

Winter Climate Action Plan Forum on Water Late January/Early February Winter Forum on Water - date tbd



Group Conversation

An aerial photograph of a vast mountain range. The peaks are rugged and covered in patches of snow, with some dark rock faces visible. The valleys between the mountains are filled with dense evergreen forests, also partially covered in snow. The sky is a clear, bright blue.

1. What was one thing Leah shared that you see connecting to a need, opportunity, or our context locally?
2. What is one climate action you'd like to learn more about or be more engaged with?



Thank you for coming tonight! Please email info@resilientmethow.org with questions and ideas.

**Thank you to supporters of Resilient Methow:
CO2 Foundation, North Central Washington Community
Foundation, and the WWU Sustainability, Equity, and Justice
Fund.**